



## Mine and Tunnel Roof Control Products

2600 Boyce Plaza Road, Suite 119, Pittsburgh, PA 15241  
 Telephone: 412/257-8730 Fax: 8738 / Toll free number: 1-866-279-6507  
[www.fmlocotos.com](http://www.fmlocotos.com) / email: [fmlocotosco@comcast.net](mailto:fmlocotosco@comcast.net)



**Includes:**

- Watertight, Foam Padded Case
- Bore Hole Camera (For 1" Hole)
- Hole Adaptors (For 1 3/8" + 1 7/8" or larger)
- 12 Volt Battery + Smart Charger
- Microphone
- Flexible, Quick Release Insertion Rods in either 3ft. or 4ft. marked increments
- 5.6" LCD Viewing Monitor
- Digital Video Recorder
- 2 GB SD Card
- Card Reader (Allows easy viewing and storage of files on PC)

CAMERA HEAD

1 AMP FUSE

SONY CHARGER AND POWER CORD

CONTROL BOX

SONY VIEWER



## Mine and Tunnel Roof Control Products

2600 Boyce Plaza Road, Suite 119, Pittsburgh, PA 15241  
Telephone: 412/257-8730 Fax: 8738 / Toll free number: 1-866-279-6507  
[www.fmlocotos.com](http://www.fmlocotos.com) / email: [fmlocotosco@comcast.net](mailto:fmlocotosco@comcast.net)

### STRATASCOPE/BOREHOLE VIDEO CAMERA

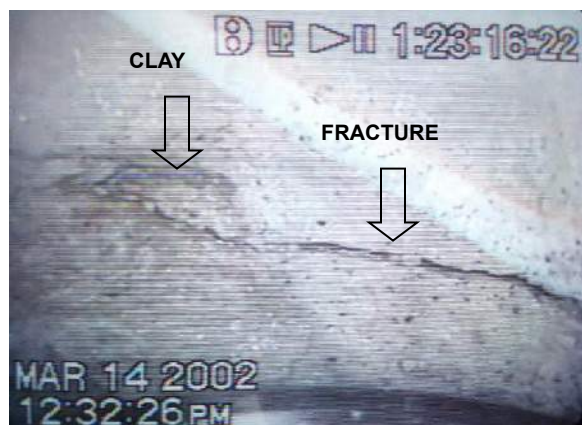
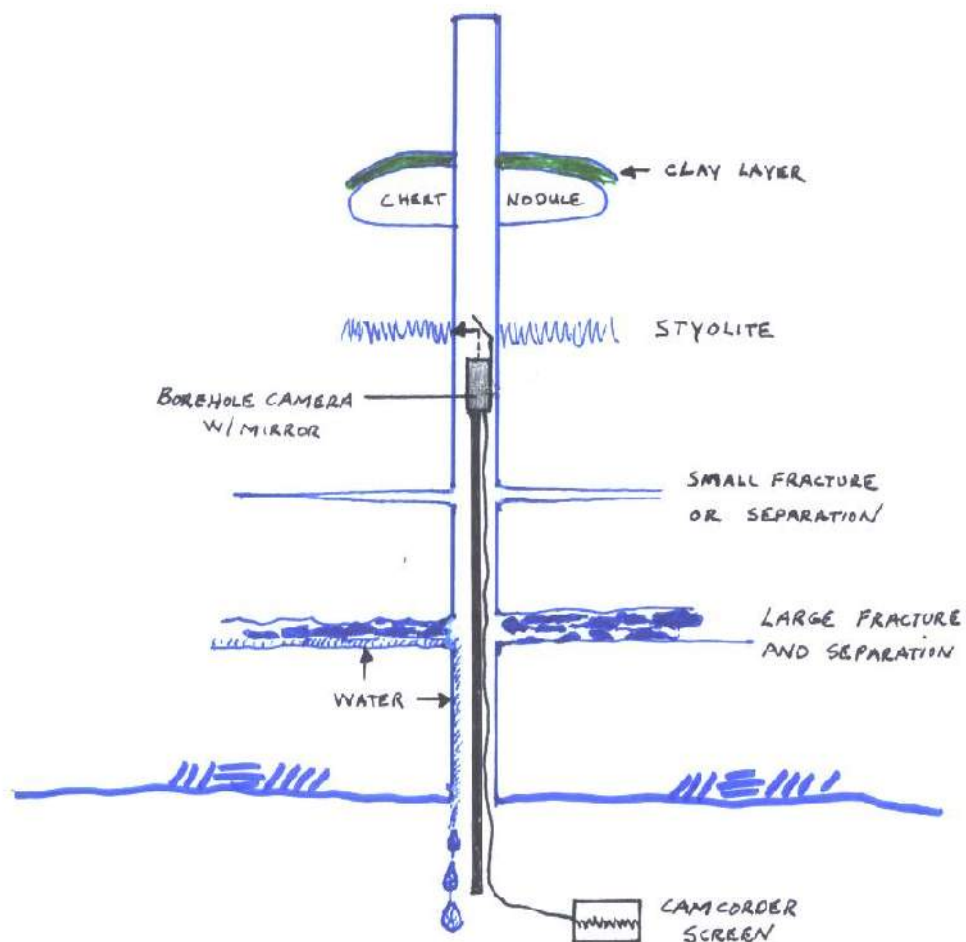
F.M. LOCOTOS CO., INC. has been instrumental in marketing and distributing a new and better “borehole video camera” for use in the mining industry. The camera was developed and manufactured by ROCK MECHANICS ASSIST, with input from THE F.M. LOCOTOS CO., INC. THE F.M. LOCOTOS CO., INC. has partnered with ROCK MECHANICS ASSIST to distribute this improved technology into the mining industry.

We help mines solve their roof control problems and help realize the need for a reliable and effective camera to evaluate the roof. The “Stratascope” camera is easy to use and the images are clear and viewable on the screen, offering real-time viewing. The images are recorded digitally for evaluation and comparison of previous and current scopings. Bottom line...this system performs better and costs less!

The Stratascope consists of:

- Miniature video camera with lighting that fits in a 1” diameter hole. (Hole adaptors for 1-3/8” + 1-7/8” or larger).
- Digital Video Recorder with 5.6” LCD viewing monitor, with 2 GB SD card. Microphone included for use in narration.
- Sealed 12V rechargeable battery to run the video camera and lighting. (Charger included).
- Flexible insertion rods marked in one-foot increments, with quick disconnects. Choice of 3ft. or 4ft. segments, plus carrying tube.
- Watertight, sturdy, well-padded carrying case.
- Instructions and operating tips.

Please feel free to contact the distributor, **F.M. LOCOTOS CO., INC.**, if you have any questions or would like an on-site demonstration of this product.



This is a small horizontal fracture developing into a separation in the roof. Note the green clay in the rock. The diagonal light band is a reflection off the TV screen when photographed.



This is a clay seam about 1/8" thick between a layer of limestone and chert. The diagonal light band is a reflection off the TV screen when photographed.